

GS1 Datasheet Smooth Natural Latex Powder Free Gloves

AQL 1.5

EN455 Parts 1, 2 & 3

FSC Latex

MDD 93/42/EEC

EN374

Class 1 Medical Device



General Details

Material	Natural Latex
Surface Finish	Powder Free (doublechlorinated.)
Colour	Natural
Geometry	Ambidextrous
Surface Finish	Fully Smooth
Cuff Features	Beaded

Glove Specifications

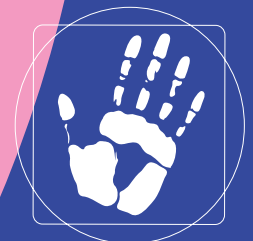
Size	Weight g/pc	Length mm	Palm Width mm	Thickness		
				Cuff	Palm	Finger
XS	4.9 ± 0.2	240	≤ 80	0.09 ± 0.01	0.13 ± 0.01	0.15 ± 0.01
S	5.4 ± 0.2	240	85 ± 5	0.09 ± 0.01	0.13 ± 0.01	0.15 ± 0.01
M	5.8 ± 0.2	240	95 ± 5	0.09 ± 0.01	0.13 ± 0.01	0.15 ± 0.01
L	6.4 ± 0.2	240	105 ± 5	0.09 ± 0.01	0.13 ± 0.01	0.15 ± 0.01
XL	7 ± 0.2	240	≥ 110	0.09 ± 0.01	0.13 ± 0.01	0.15 ± 0.01
Tensile properties before ageing (all gloves)				Load @ peak N	>6	
Tensile properties after ageing (all gloves)				Load @ peak N	>4	

Performance Requirements

Test	Related Defects	Inspection Level	AQL
Water Leak at Final Release	Holes	G-1 Single Sampling Plan	1.5

Performance Requirements

Maunufacturing Standards	Incompliance with ISO 9001:2008
Presentation	Standard: 100 gloves per dispenser box; 10 dispenser boxes per Carton
Glove Care	Should not store under direct sunlight or at high heat and humid conditions. Single use only.



G·S·L

WWW.GLOVEMAN.CO.UK

Gloveman Supplies Ltd

Vision House, Treleigh Ind Est,

Redruth TR16 4AX

t. 01209 310734

f. 01209 314760